

ProtoBoard-3U-CONN - with connectors



Prototype circuit board with common connector footprints.

Features

- *ProtoBoard-3U-CONN* speeds assembly by providing footprints for common connectors plus a switch.
 - DB-9 - modular phone jack (2)
 - DB-25 - 1/8" sub-mini (2) or mod. handset jack (2)
 - SPDT switch - coaxial power connector
 - 10baseT Ethernet Jack (1) or BNC (2)
- *ProtoBoard* saves time! *ProtoBoard* has a general purpose stripboard circuit pattern that is pre-cut with 6 holes per strip.
- Standard single height (3U) Eurocard/VME size. Many off the shelf enclosures and card cages are available.

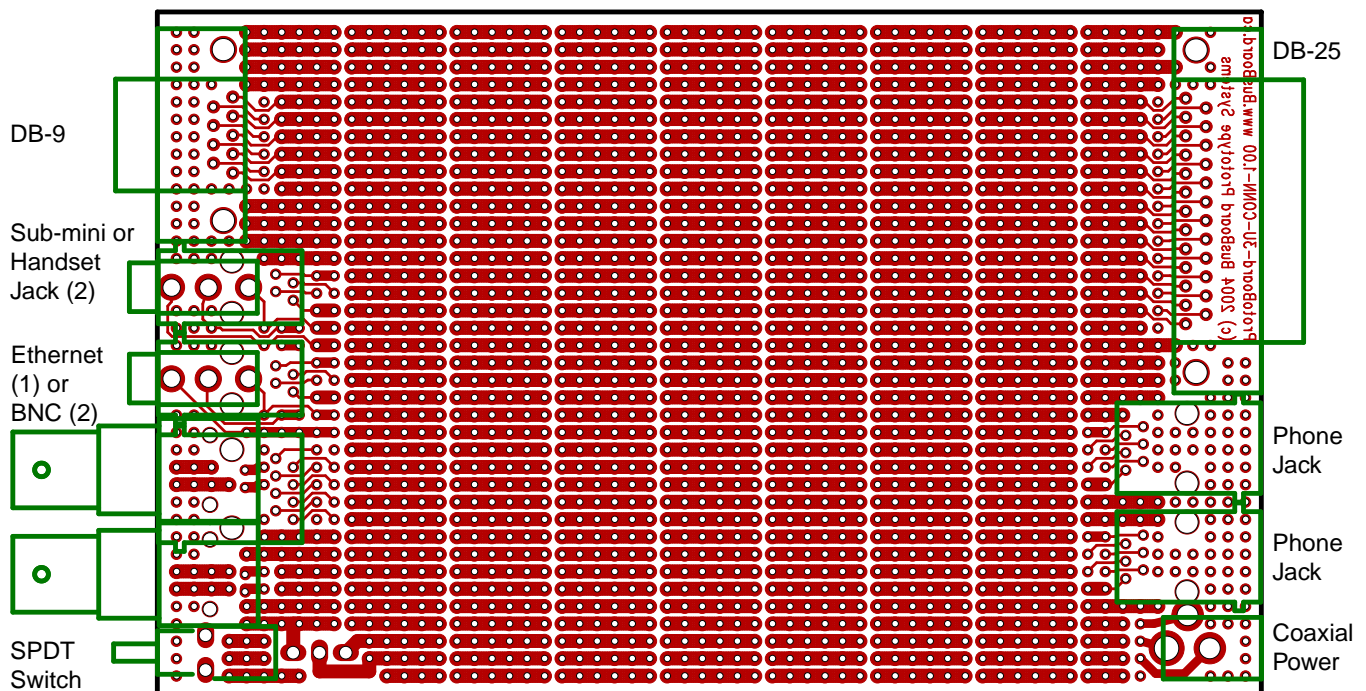
- Includes a RJ-45 jack for 10baseT ethernet (8 position modular).

Specifications

- **Lead Free** PCB with a flux coating for easy soldering.
- Etched FR4 glass-epoxy circuit board.
- Single sided PCB, 1oz/ft² copper, tinned for easy soldering.
- Holes are drilled on 0.1" (2.54mm) centers.
- 0.037" (0.94mm) holes sized for ICs or square post headers.
- 3.9" wide, 6.3" long, 1/16" thick (100 x 160 x 1.6mm).

Order Part# PR3UC

Board Layout With Connectors



Compatible Connectors

The following list provides suggestions for parts which can be used with ProtoBoard-3U-CONN. It is not an exhaustive list. In most cases, parts from many different manufacturers may be used.

BusBoard Prototype Systems - Built for designers

www.BusBoard.net sales@busboard.net

BPS-MAR-PR3UC-001 Rev 3.00

Telephone Connectors

Amp 520249-2 Modular Phone Handset Jack, Right Angle, 4 Positions, 4 Contacts.
Amp 520257-2 Modular Phone Handset Jack, Vertical, 4 Positions, 4 Contacts.
Amp 520250-3 Modular Phone Jack, Right Angle, 6 Positions, 6 Contacts.
Amp 520258-3 Modular Phone Jack, Vertical, 6 Positions, 6 Contacts.

10baseT Ethernet Connectors

Amp 520251-4 Modular Jack, Right Angle, 8 Positions, 8 Contacts.
Amp 520259-4 Modular Jack, Vertical, 8 Positions, 8 Contacts.

Barrel Coaxial Power Connectors

Switchcraft RAPC722 Coaxial Barrel Power Connector, 2mm Center Pin.
Switchcraft RAPC712 Coaxial Barrel Power Connector, 2.5mm Center Pin.

Sub-mini Connectors

Switchcraft 35RAPC2AV 1/8" Sub-Mini Jack, Right Angle, Mono.

BNC Connectors

Amp 227161-2 BNC Connector, Right Angle, Black Housing.
Amp 227161-1 BNC Connector, Right Angle, White Housing.
Molex 73137-5005 BNC Connector, Right Angle, Black Housing.
Molex 73137-5015 BNC Connector, Right Angle, White Housing.

Right Angle DB Connectors

Amp 748879-1 DB-9 Male Connector, Right Angle, PCB mount, 0.318 Style, Boardlocks,
4-40 Threaded Inserts.
Amp 748875-1 DB-9 Female Connector, Right Angle, PCB mount, 0.318 Style, Boardlocks, 4-40
Threaded Inserts.
Amp 748881-1 DB-25 Male Connector, Right Angle, PCB mount, 0.318 Style, Boardlocks, 4-40
Threaded Inserts.
Amp 748877-1 DB-25 Female Connector, Right Angle, PCB mount, 0.318 Style, Boardlocks, 4-
40 Threaded Inserts.

Vertical DB Connectors

Amp 745051-2 DB-9 Male Connector, Vertical, PCB mount, 0.318 Style, 4-40 Threaded Inserts.
Amp 207841-4 DB-9 Female Connector, Vert., PCB mount, 0.318 Style, 4-40 Threaded Inserts.
Amp 745053-2 DB-25 Male Connector, Vertical, PCB mount, 0.318 Style, 4-40 Threaded Inserts.
Amp 745058-4 DB-25 Female Connector, Vert, PCB mount, 0.318 Style, 4-40 Threaded Inserts.

SPDT Switches

E-Switch 100-SP-1-T1-B1-M7-Q-E SPDT Switch, Right Angle, PCB Mount.
NKK M2012SS2W30 SPDT Switch, Right Angle, PCB Mount.